



What's new in Robot Structural Analysis Professional 2023

Key themes and features

Key themes

Robot Structural Analysis Professional 2023



Structural analysis



Design optimization



Interoperability



Productivity & learning
enhancements

New features and enhancements

Robot Structural Analysis Professional 2023

Structural analysis

- Gravity analysis with Load Takedown Method
- Improved load distribution from cladding
- Enhanced seismic analysis
- Eurocode wind load for frames

Interoperability

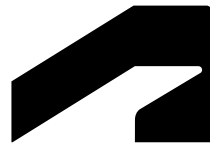
- Revit contextual analytical model integration

Design optimization

- Design codes updates
 - for North America
 - for South America
 - for Europe

Productivity & learning enhancements

- Modeling & results exploration enhancements
- New learning content

A 3D rendering of a metallic structural frame, possibly a robot arm or a mechanical component, shown in a perspective view. The frame is made of polished metal with sharp edges and is illuminated from the top left, creating highlights and shadows that emphasize its geometric form.

Structural analysis

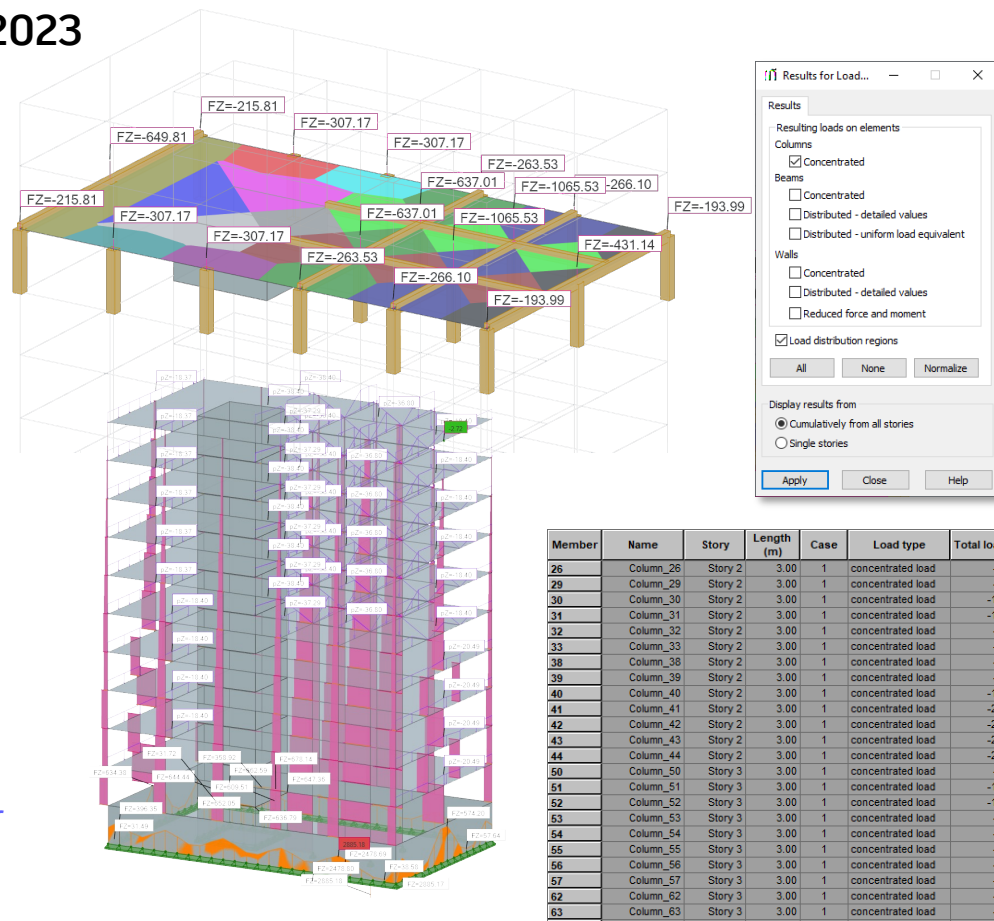
Robot Structural Analysis Professional 2023

Gravity analysis with Load Takedown Method

Robot Structural Analysis Professional 2023

- Early design assessments for building foundations and column layouts
- Easy to use analysis for easy to create analytical model to assess building's behavior
- Transferred loads as results for objects-based code checking

Make design decisions earlier and faster

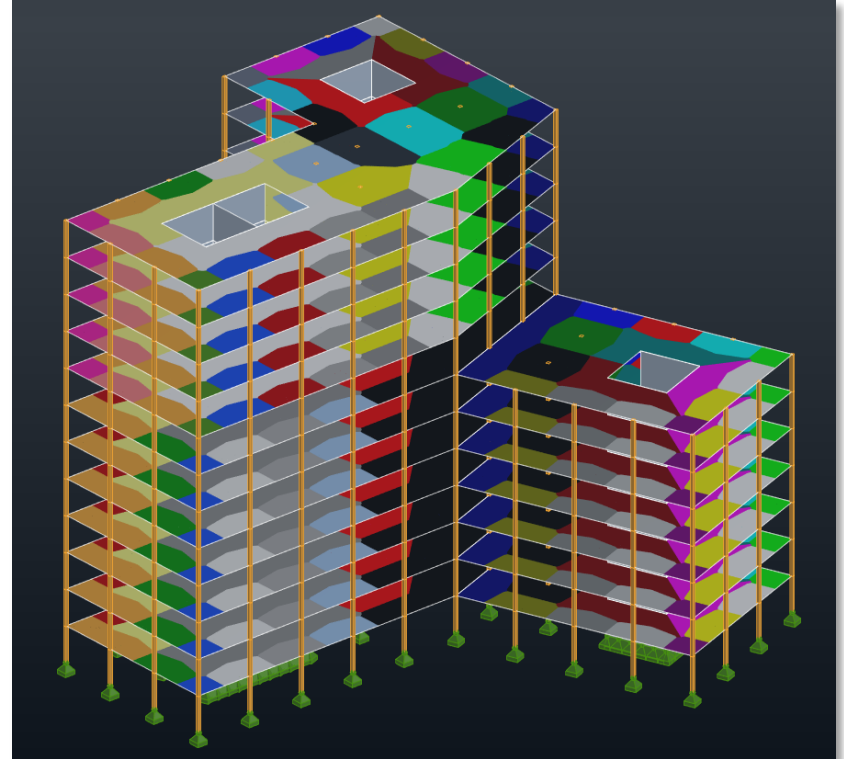


Improved load distribution from cladding

Robot Structural Analysis Professional 2023

- Corrected load distribution on claddings with objects or elements carrying the load overlap
- Improved the performance of load distribution on claddings
- Improved distribution of linear loads on edges applied to multiple panel and cladding types defined as a single load record
- Corrected load direction on bars coming from cladding load distribution

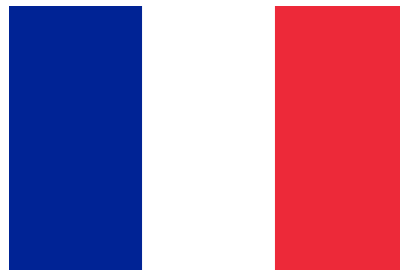
Greater accuracy in structural analysis



Enhanced seismic analysis

Robot Structural Analysis Professional 2023

- France
 - French National Annex NF EN 1998-1/NA:2013 Décembre 2013.
 - Local provisions for Nice: NF EN 1998-1/Nice PPR/NA:2007 19Juil. 2011.
- Portugal
 - Portuguese National Annex NP EN 1998-1:2010/A1 2013
- USA
 - Enhanced ASCE 7-16 and IBC 2018
 - Updated calculation of spectrum parameters for IBC seismic codes



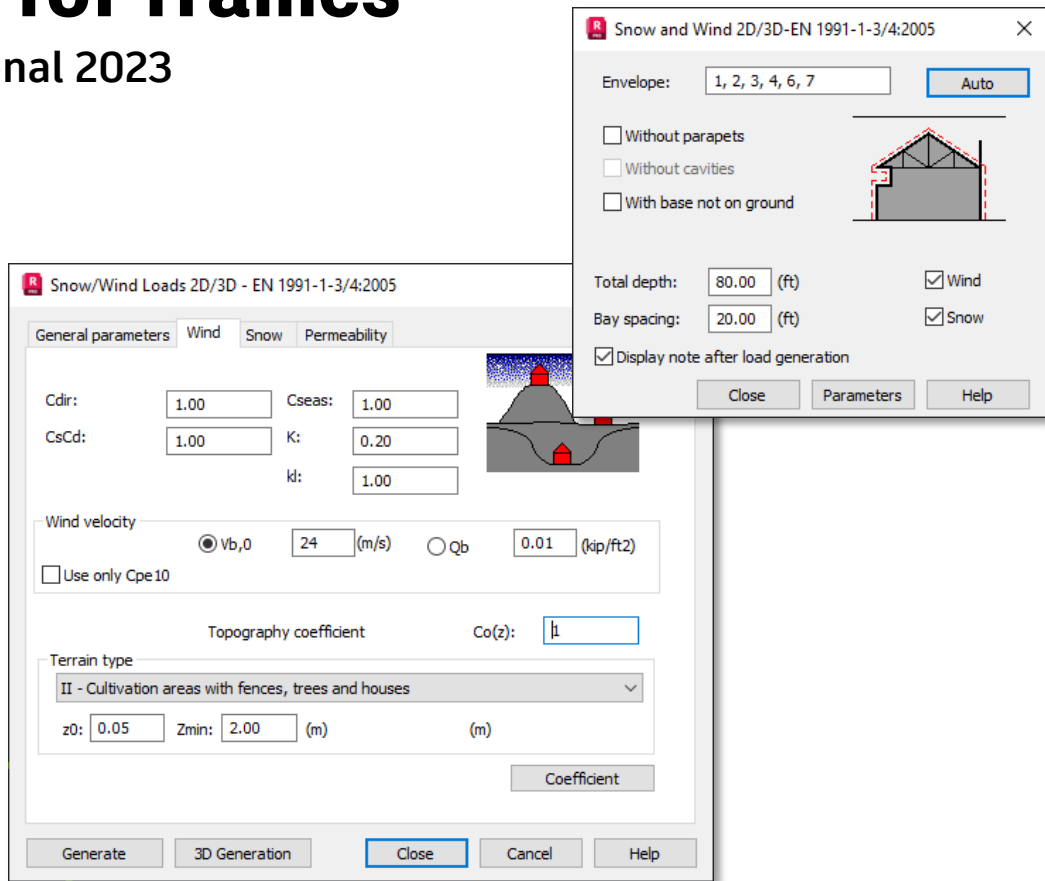
Greater accuracy in structural analysis

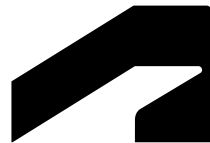
Eurocode wind load for frames

Robot Structural Analysis Professional 2023

- Updated wind load automation for 2D and 3D frames according to EN1991-1-4:2005
- Updated pressure coefficients for wind load generation on frames

More accurate generation
of code-based wind loads



A close-up, low-angle shot of a metallic robot joint, showing the intricate mechanical structure and the polished, reflective surfaces of the metal components.

Interoperability

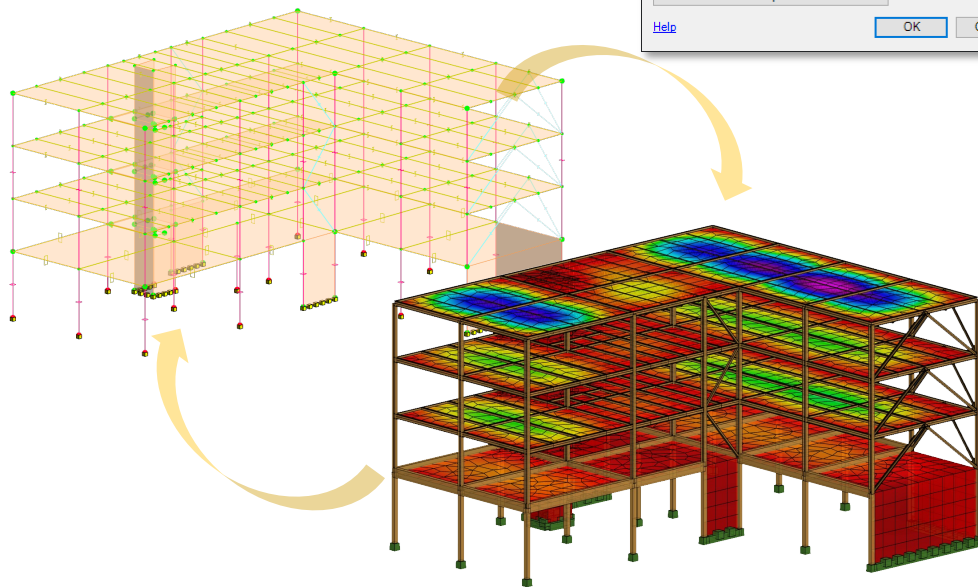
Robot Structural Analysis Professional 2023

Revit contextual analytical model integration

Robot Structural Analysis Professional 2023

- BIM connectivity updates to Revit contextual analytical model
- Bidirectional analytical model exchange
- Two types of integration

Better support of BIM-centric structural analysis workflows



A 3D rendering of a metallic mechanical structure, possibly a robot arm or a structural component, shown in a perspective view. The structure is composed of several interconnected plates and beams, with a polished, reflective surface. It is positioned on the left side of the image, extending from the top left towards the bottom center.

Design optimization

Robot Structural Analysis Professional 2023

Design codes updates for North America

Robot Structural Analysis Professional 2023

- Canada
 - Steel design code: CAN/CSA-S16-19
- USA
 - Required Reinforcement design code: ACI 318-19



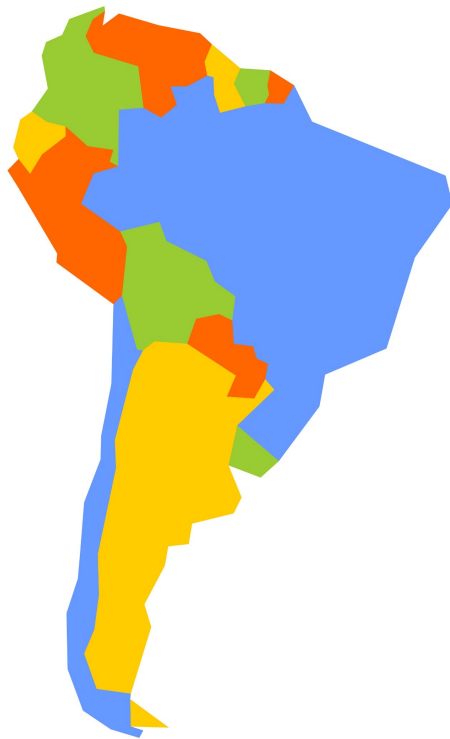
More accurate design of structures
following local standards

Design codes updates for South America

Robot Structural Analysis Professional 2023

- Brazil
 - Material properties library according to NBR codes of standards
 - Steel sections library
 - Reinforcing rebar library containing bar sizes and steel properties according to NBR 6118:2014
 - Vehicles database for moving load cases NBR 7188
 - Load combinations NBR 8681:2003
 - Steel design code NBR 8800:2008

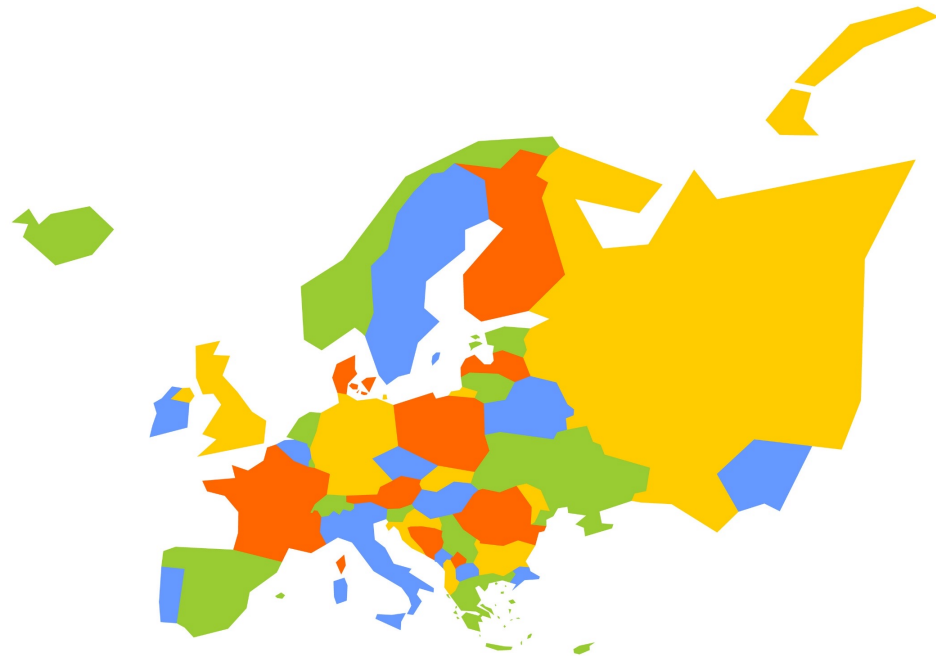
More accurate design of structures
following local standards



Design codes updates for Europe

Robot Structural Analysis Professional 2023

- Denmark
 - Load combinations: National Annex DS-EN 1990 NA:2021
 - Steel design code: Danish National Annex DS/EN 1993-1:2005/DK NA:2019/A1:20141
- Finland
 - Load combinations: National Annex SFS-EN 1990/2016



More accurate design of structures
following local standards



Productivity enhancements

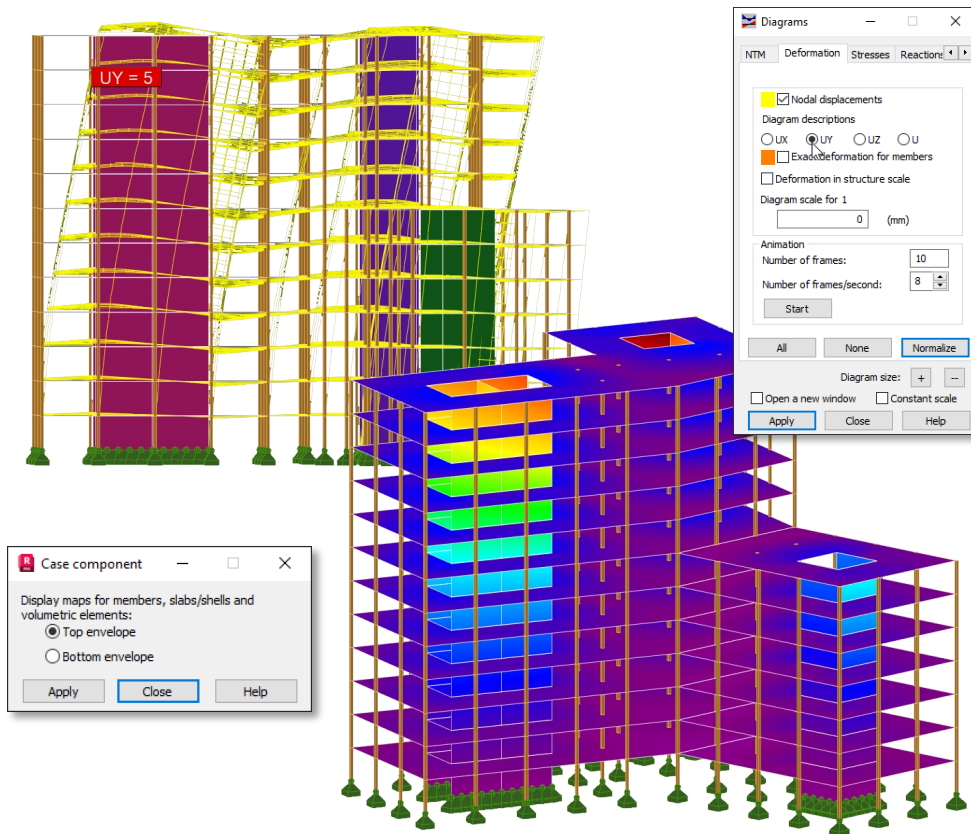
Robot Structural Analysis Professional 2023

Modeling & results exploration enhancements

Robot Structural Analysis Professional 2023

- Groups created on DWG/DXF file import
- Nodal displacement in separate XYZ directions
- Improved results presentation for multiple load cases
- Easy color selection for results presented as crosses

Improved usability and productivity



New learning content

Robot Structural Analysis Professional 2023

- The entire online help content has been translated to new languages
 - Spanish
 - Portuguese (Brazilian)

Shorter learning curve for new adopters

