



What's new in Civil 3D 2023

Key themes and features

Key themes

Civil 3D 2023



Design optimization



Design productivity

New features and enhancements

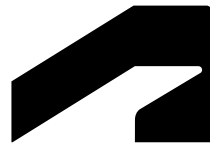
Civil 3D 2023

Design optimization

- Grading optimization enhancements

Design productivity

- Pressure network fit and finish
- Rail switches and crossings
- Corridor solid property set
- Corridor targeting efficiency
- Project Explorer enhancements
- Subassembly Composer enhancements
- Performance enhancements



Design optimization

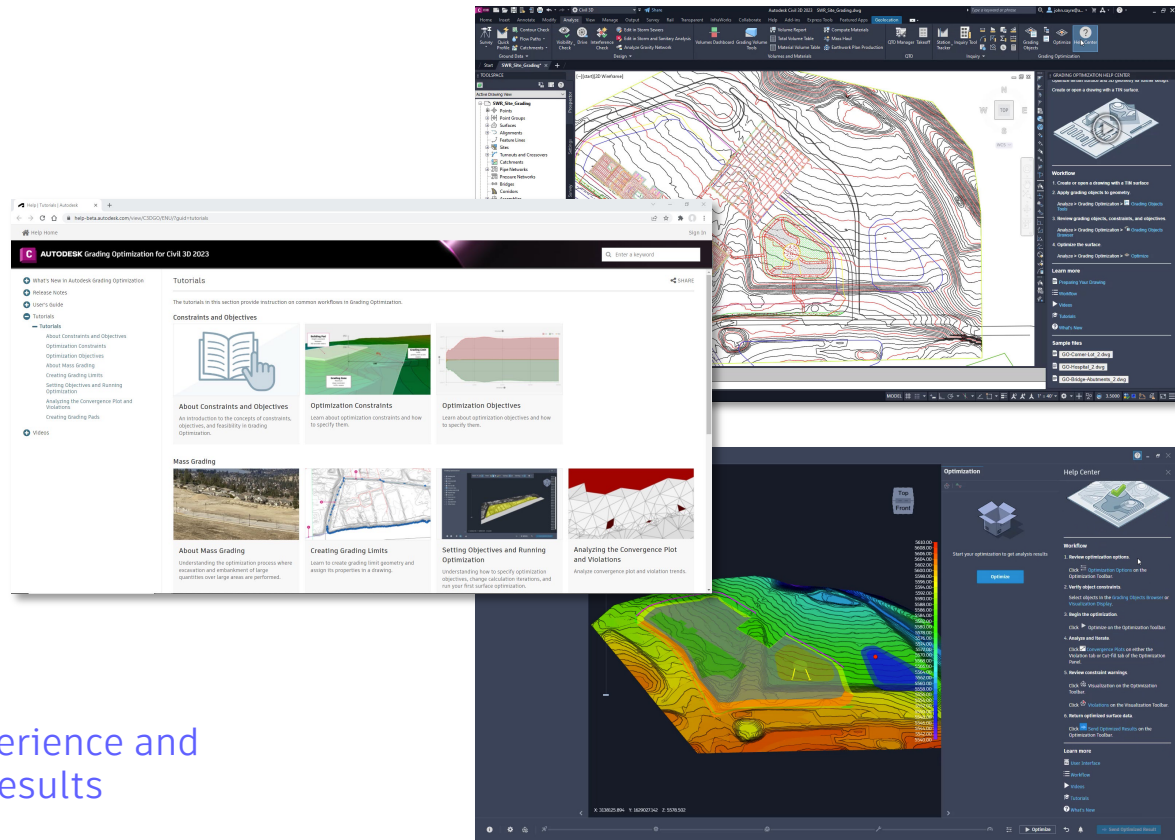
Civil 3D 2023

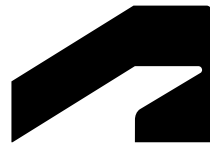
Grading Optimization enhancements

Civil 3D 2023

- Non-collinear segments returned to Civil 3D
- Help Center
- Notification Center
- Enhanced convergence and validation graphs
- Enhanced Progress Bar

Improvements to your learning experience and a better understanding of grading results





Design productivity

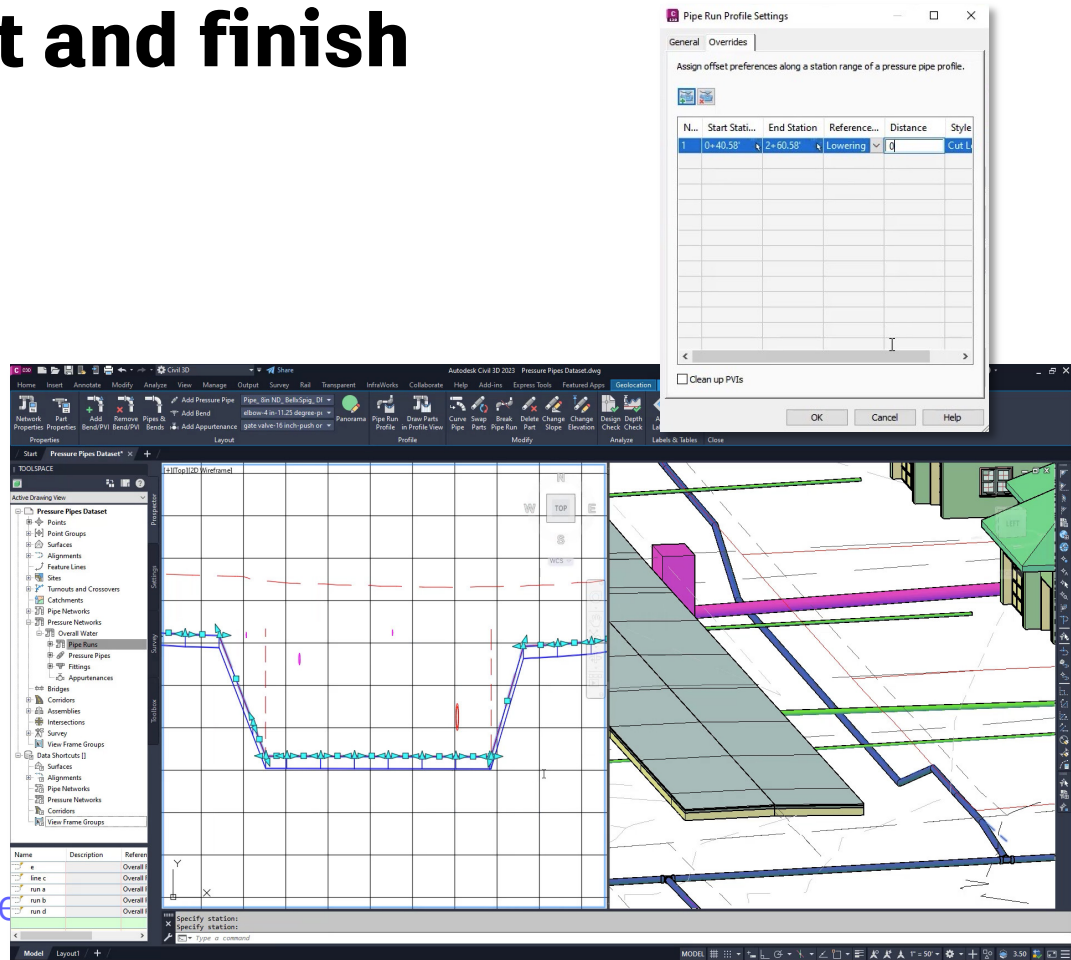
Civil 3D 2023

Pressure network fit and finish

Civil 3D 2023

- Search by keyword text to pressure parts
- Show pressure/gravity network parts property set data in profile view
- Profile Editing Enhancements

Design pressure pipes more accurately

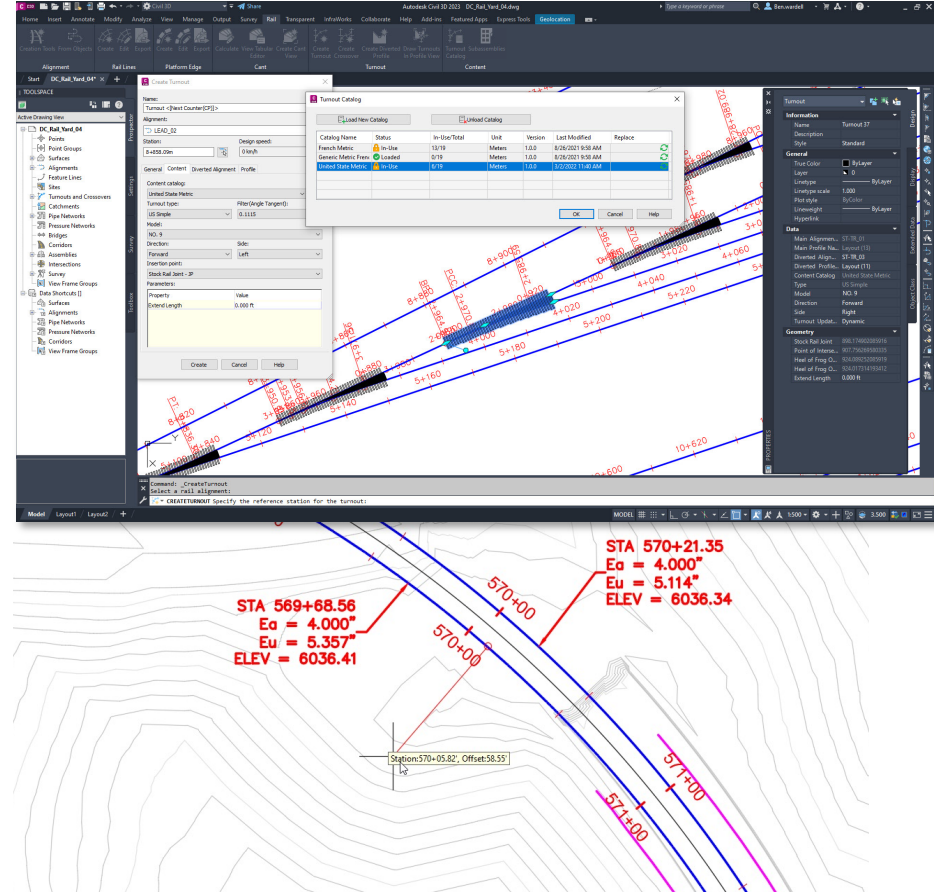


Rail switches and crossings

Civil 3D 2023

- Utilize US special trackwork catalogues
- Replace existing catalogue with customized catalogue
- Create a new cant information label at any station location

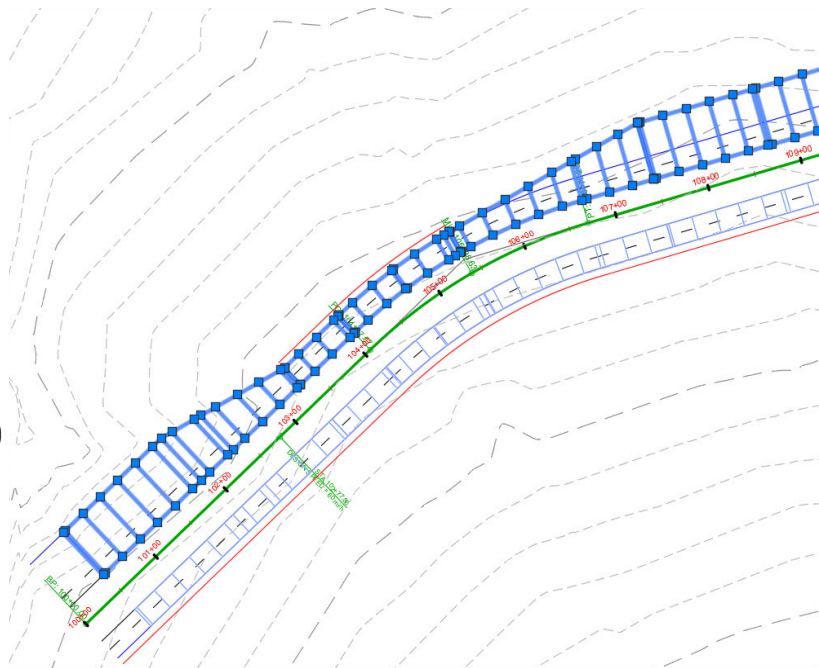
Expanded control with US catalog and cant labels



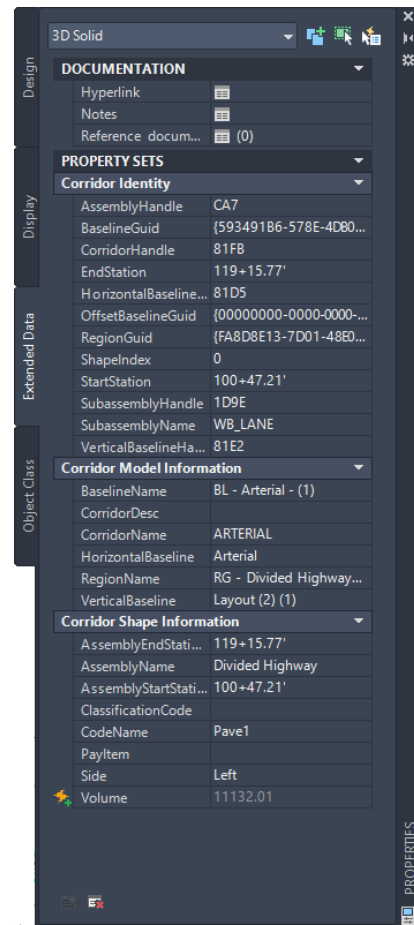
Corridor solid property set

Civil 3D 2023

- Expanded corridor solids property set data
- Property set data updates dynamically with corridor revisions
- Corridor solid handle ID remains, even when corridor is revised



Meet BIM mandates with updated property set definitions

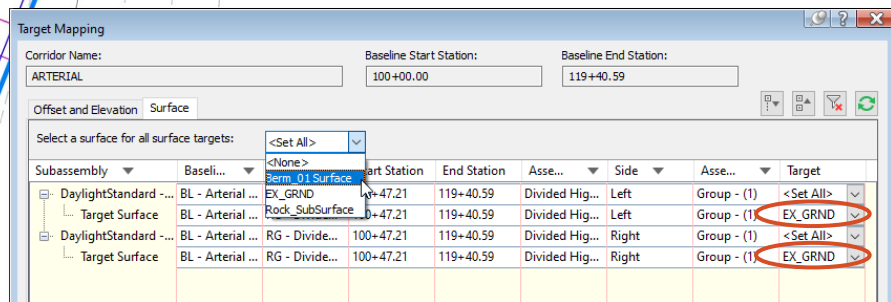
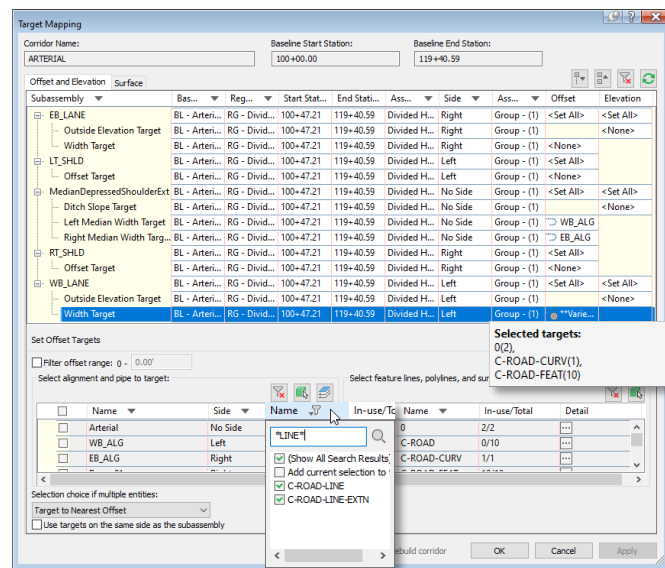
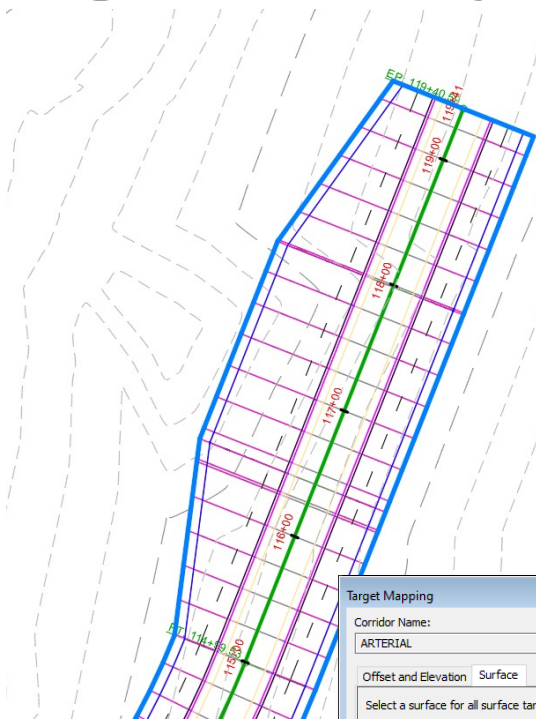


Corridor targeting efficiency

Civil 3D 2023

- Dynamic layer targeting
- Useful tooltips on the Target Mapping dialog box
- Sort alignments and feature lines by character or name
- Target multiple surfaces at one time

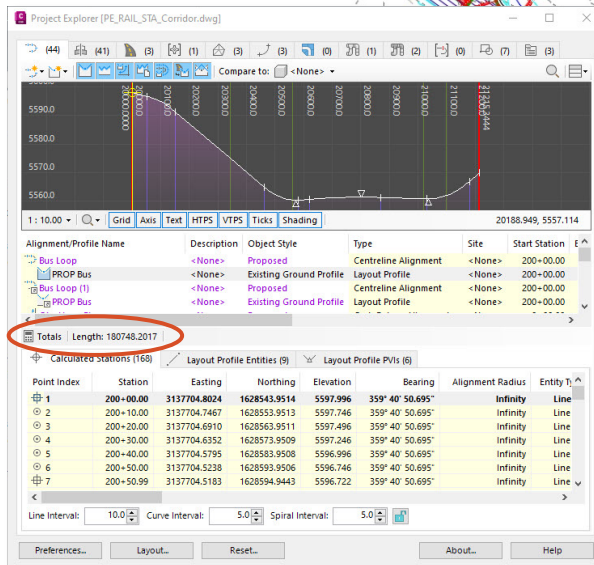
Increased efficiency using the Target Mapping dialog box



Project Explorer enhancements

Civil 3D 2023

- Display totals in Project Explorer dialogue box
- Create row and columns for total quantities
- Control text size and row height
- Compare COGO points and parcels to feature lines



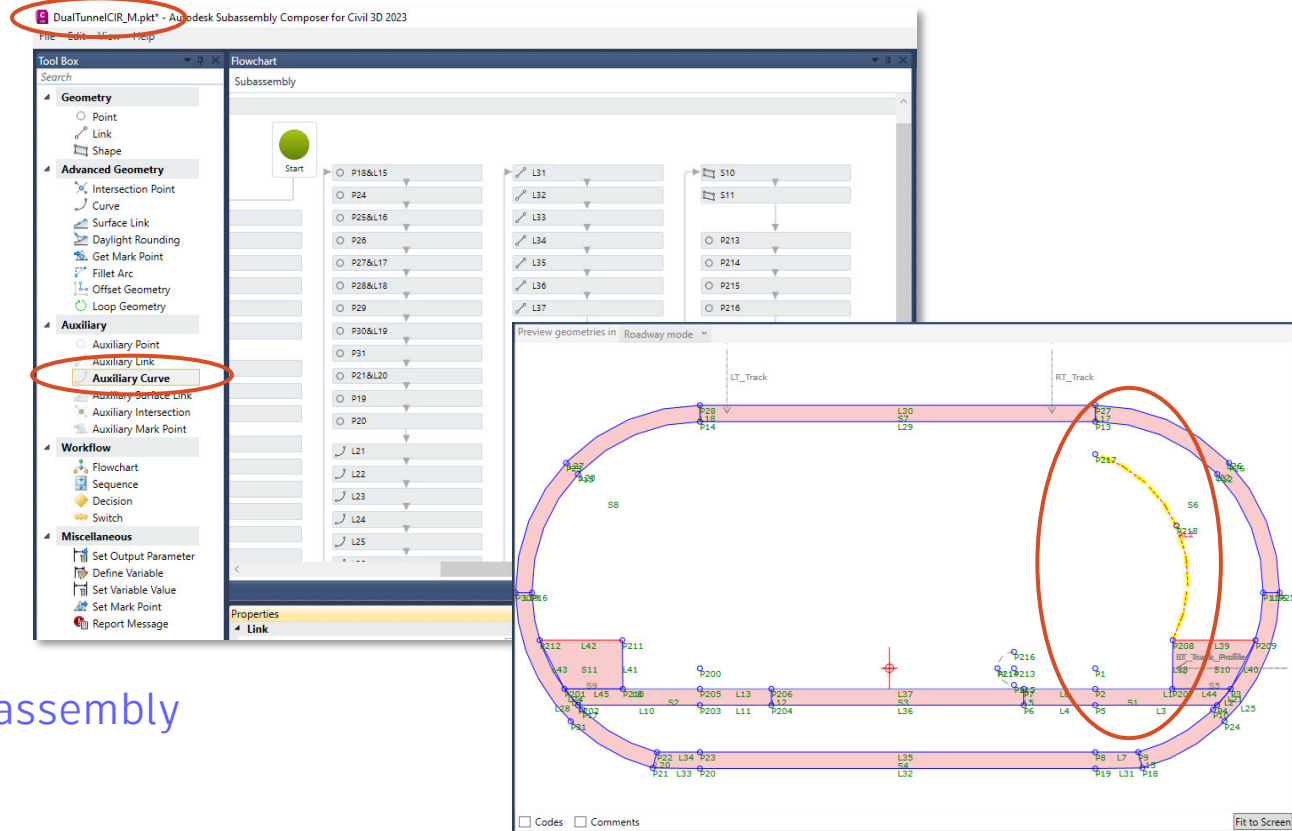
Table, reports and object comparison enhancements

	Start Invert	End Invert	Slope	2D Length (Center to Center)	Over
	5557.597	5552.445	1.78 %	287.5218	
	5552.445	5550.521	1.29 %	149.6482	
	5555.917	5554.866	0.70 %	149.9457	
	5554.866	5554.211	0.48 %	136.0838	
	5581.303	5580.845	0.50 %	91.6232	
	5580.845	5580.045	0.50 %	160.0571	
	5580.045	5578.037	0.50 %	401.4178	
	5578.037	5576.062	0.50 %	395.0849	
	5576.062	5572.629	2.36 %	145.1774	
	5562.899	5562.325	1.19 %	48.3005	
	5562.325	5554.521	5.83 %	133.7800	
	5548.035	5550.420	-2.18 %	109.4605	
	5550.420	5552.499	-1.38 %	150.6307	
Pipe - (21)	5572.000	5558.657	7.43 %	179.5237	
Pipe - (24)	5535.189	5534.337	0.40 %	212.0838	
Pipe - (26)	5554.211	5554.800	-1.16 %	50.7107	
Pipe - (27)	5554.521	5552.994	2.98 %	51.2448	
Pipe - (29)	5574.553	5573.937	1.00 %	61.5772	
Pipe - (30)	5574.840	5573.000	1.11 %	165.5614	
Pipe - (31)	5574.900	5572.500	2.18 %	109.9686	
Pipe - (32)	5589.316	5588.518	1.00 %	79.8598	
Pipe - (33)	5579.730	5572.500	5.43 %	133.1078	
Pipe - (34)	5548.070	5545.476	1.35 %	192.2683	
Pipe - (35)	5555.831	5552.499	1.72 %	193.6956	
Pipe - (38)	5561.265	5560.332	1.24 %	75.1724	
Pipe - (39)	5560.332	5557.597	1.55 %	176.6755	
Pipe - (41)	5553.961	5553.118	1.11 %	76.0097	
Totals				1116.1988	

Subassembly Composer enhancements

Civil 3D 2023

- Create auxiliary curve data within the assembly
- Create temporary geometry for design guidance
- Save indicator reflects when changes are made to the assembly



Expanded control for subassembly parameters

Performance enhancements

Civil 3D 2023

- Section view performance improvements
- 20% faster sample line editing on average
- 33%+ improvement in Event Viewer performance
- Section viewport performance improvements

Product performance enhancements in
several key areas

