



What's new in Advance Steel 2023

Key themes and features

Key themes

Advance Steel 2023



Design productivity



Documentation
efficiency

New features and enhancements

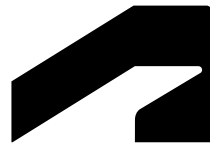
Advance Steel 2023

Design productivity

- Create beams from single segment polylines
- Independent grips for camera viewports
- Search queries for camera object selection
- AISC Shape Type Tables to 15th Edition
- Performance enhancements with the AutoCAD Graphics Engine (GFS)

Documentation efficiency

- Modeless document manager
- Grid display enhancements
- Bolt label leader line enhancement
- Improvements to drawing styles for DACH
- Automatic drawing deregistration improvements

A close-up, low-angle shot of a metallic frame structure, possibly a window or door frame, showing sharp angles and reflective surfaces. The structure is composed of several interconnected metal beams, with some parts appearing to be made of a different material or finish, creating a complex geometric pattern.

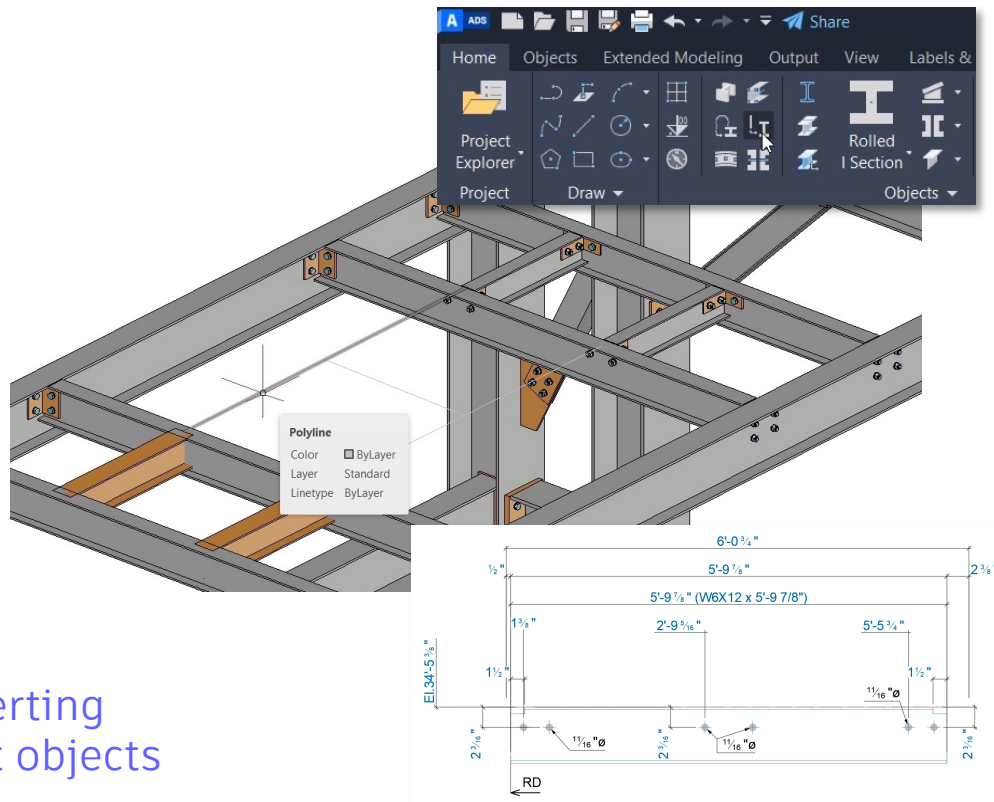
Design productivity

Advance Steel 2023

Create beams from single segment polylines

Advance Steel 2023

- Extension of existing feature to convert existing AutoCAD entities to Advance Steel objects
- Single segment polylines now converted to single straight or curved beams
- Drawing styles for single beams may be used for these objects



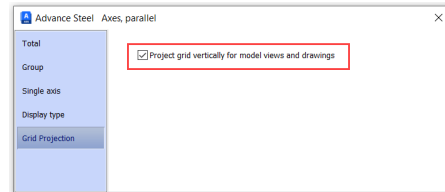
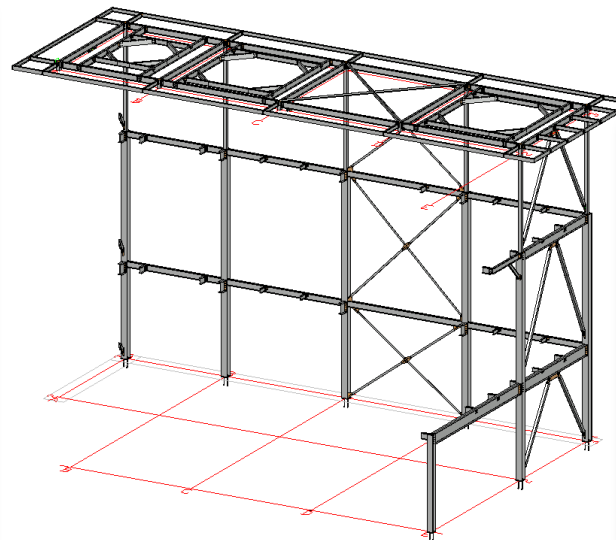
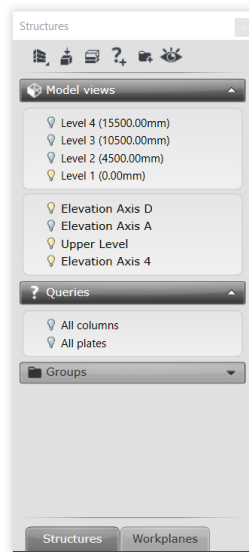
Improve your productivity when converting single segment polylines to intelligent objects

Grid display enhancements

Advance Steel 2023

- Grids can be made visible even if not enclosed in a model view
- New *Project grid vertically for GA and Camera drawings* option on the *Drawing* tab of Model View properties
- Grid visible on horizontal plane of the model view
- Unavailable for editing within model views

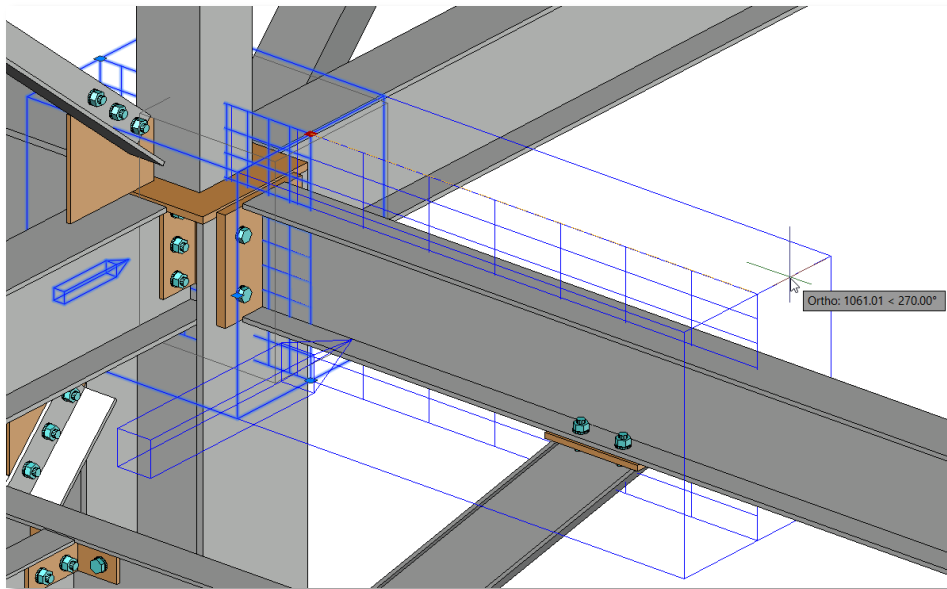
Enable grid visibility at different levels of your model



Independent grips for camera viewports

Advance Steel 2023

- Resize an XY viewport with grips
- Adjustments were symmetric in previous releases
- Grips now work independently, meaning you can adjust one side without affecting the other



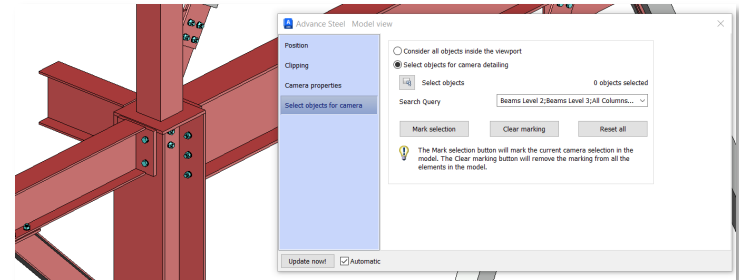
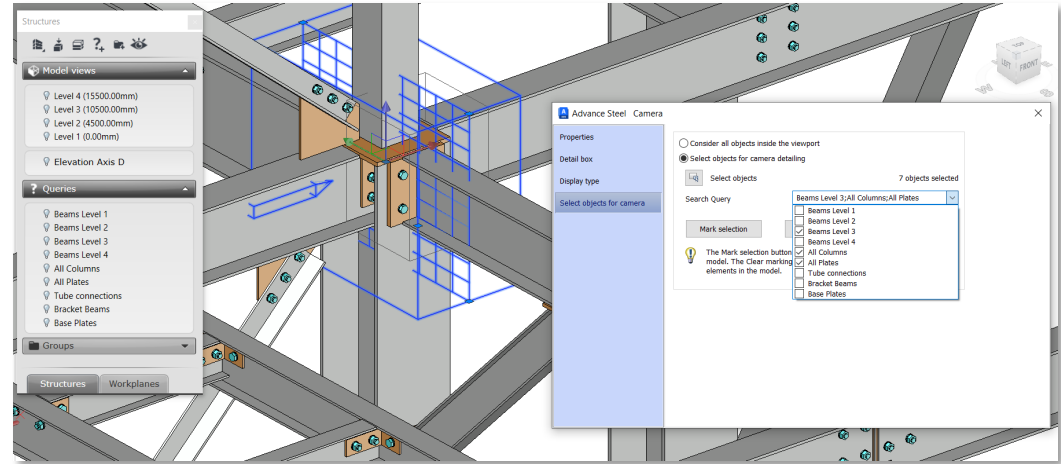
Better control when modifying the size of a camera's XY viewport

Search queries for camera object selection

Advance Steel 2023

- Quickly specify objects to include in camera views
- New option to use Search Queries available in the Project Explorer
- Multiple queries may be selected
- Clear marking button added to the dialog box

Utilize predefined search queries to select elements for use in camera views

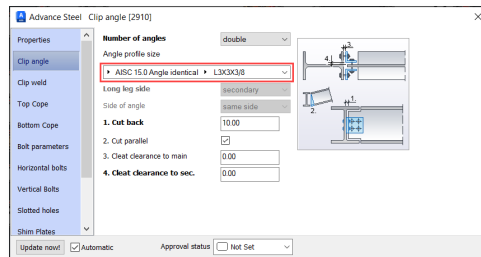
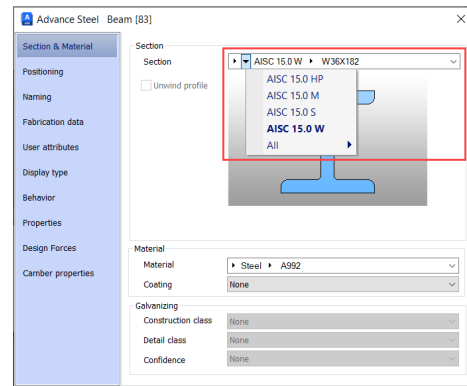
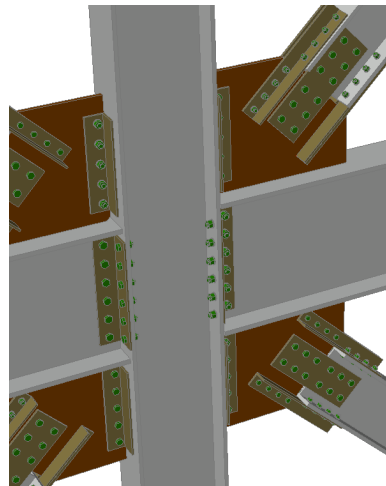


AISC shape type tables to 15th edition

Advance Steel 2023

- Profiles corresponding to AISC Shapes Database v15.0 have been added to Advance Steel
- Obsolete profiles renamed with “zzz2023” prefix
- Connection defaults updated accordingly
- Mapping tables (used between Advance Steel 2023 and Revit 2023) updated

Use the latest steel profiles to design your steel structures



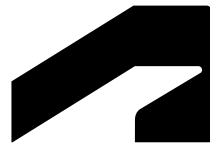
Performance enhancements

Advance Steel 2023

- Support for the AutoCAD Graphic Engine (GFS)
 - Cross-platform 3D graphics system designed to harness the power of modern GPUs and multi-core CPUs
- Shaded and Shaded with Edges visual styles are now enabled by default
- Controlled with the FASTSHADEDMODE variable

Benefit from better visual performance
when navigating large, complex projects





Documentation efficiency

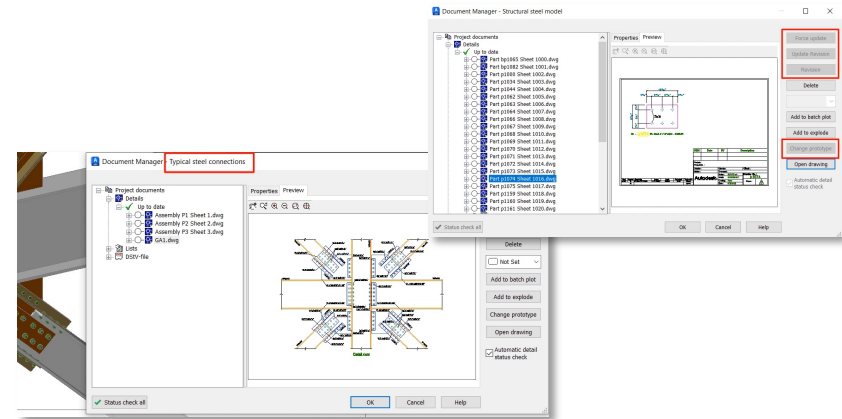
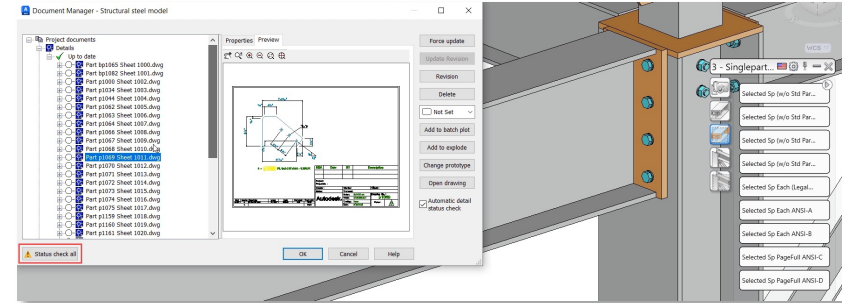
Advance Steel 2023

Modeless document manager

Advance Steel 2023

- Main interface for accessing and controlling documents created from the model
- Remains open onscreen and available for use
- New icon status as a reminder to check the status of your documentation
- Model name displayed on the title bar

Improves your experience when using the document manager

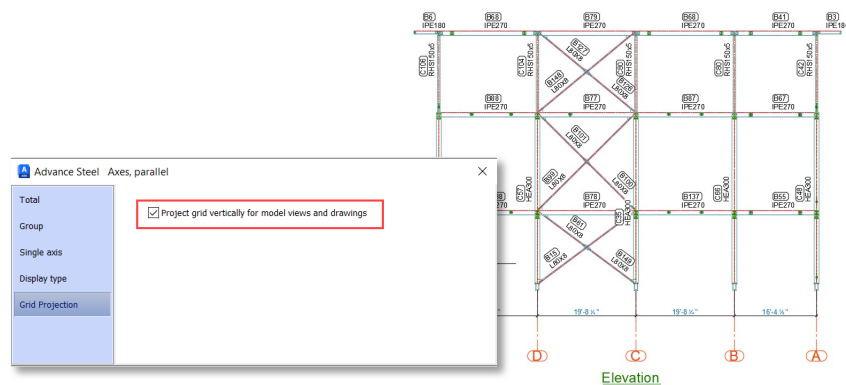
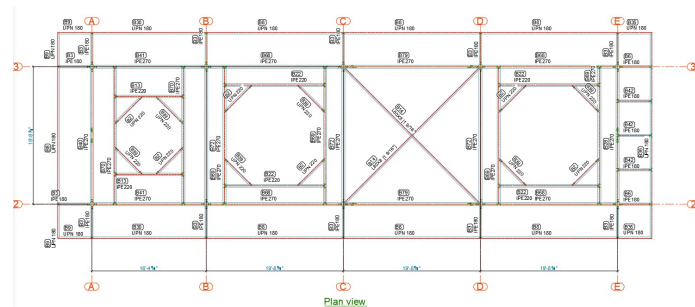


Grid display enhancements

Advance Steel 2023

- Grids can be made visible even if not enclosed in a model view
- New *Project grid vertically for GA and Camera drawings* option on the Drawing tab of Model View properties
- This applies to both plan and elevation views, even when grids are not included in the viewport in the model

Control the display of grids on your drawings created from a model view

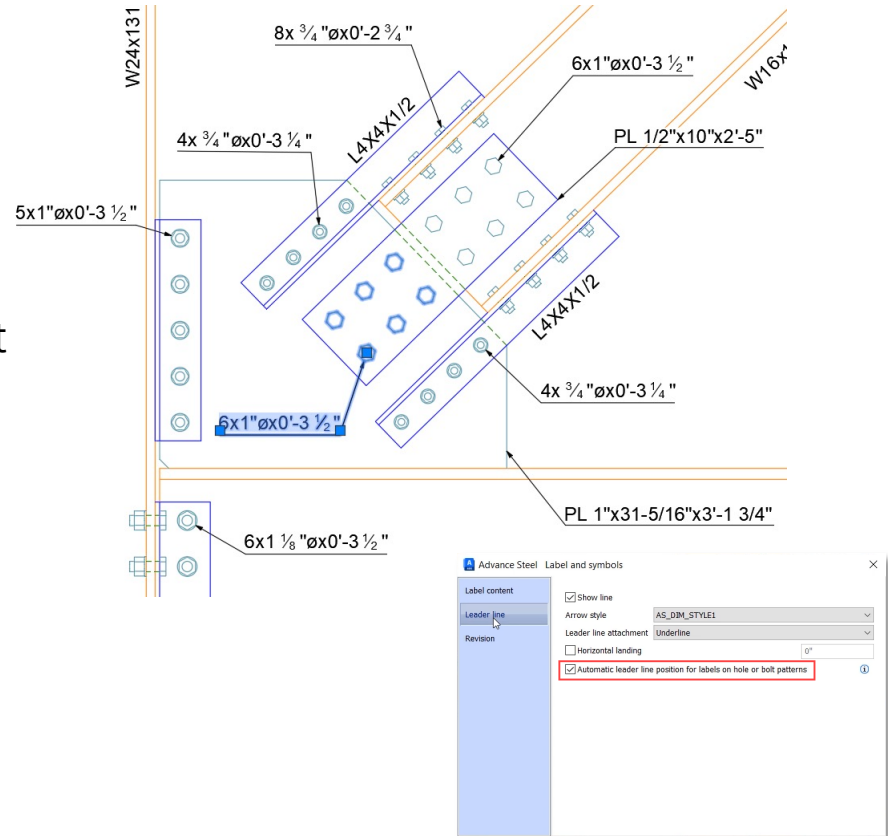


Bolt label leader line enhancement

Advance Steel 2023

- Introduced in previous releases for hole labels, same flexibility extended to bolt labels
- Moving a label makes the arrow of the leader line jump to the closest labeled bolt
- New *Automatic leader line position for labels on hole or bolt patterns* option on the *Leader line* tab of Label and symbols properties

Create more readable documentation with greater control over bolt label placement

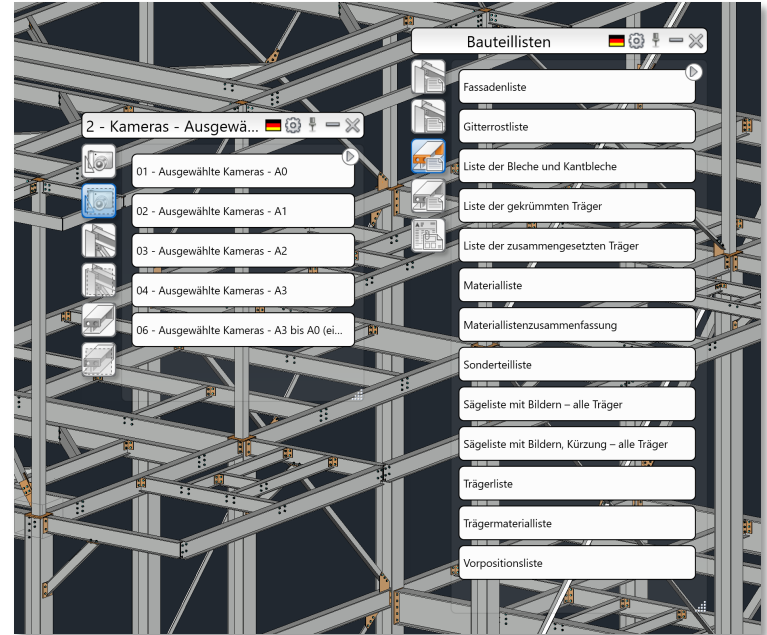


Improvements to drawing styles for DACH

Advance Steel 2023

- Several improvements made for templates delivered by default for the DACH market
- Enhanced drawing styles and drawing processes for cleaner drawings
- New and enhanced BOM templates to create bills-of-materials from your 3D models

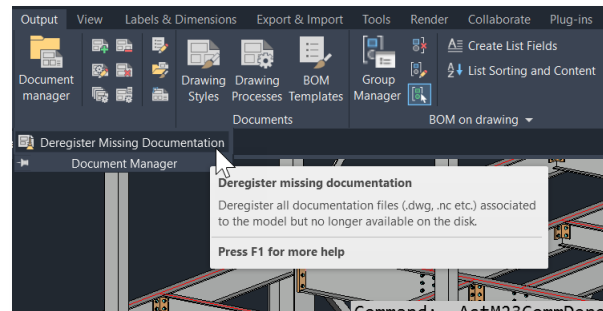
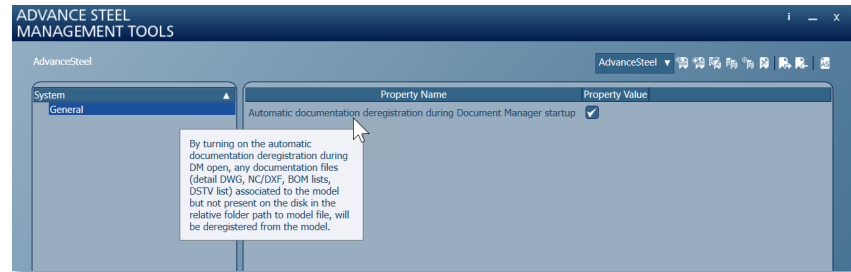
Country-specific drawing styles improve ease of use for the DACH region



Automatic drawing deregistration changes

Advance Steel 2023

- New default “Automatic documentation deregistration during Document Manager startup” in the Management Tools
- New command “Deregister missing documentation” on the Document Manager ribbon



Command: _AstM23CommDeregisterMissingDocs
Deregistered Documents :
..\\Details\\Assemblies Sheet 1.dwg
DSTV\\NC\\p1009.nc
DSTV\\NC\\p1009.nc.dxf
DSTV\\NC\\p1008.nc

More flexibility in drawing
deregistration changes

